



# LIFECYCLE FIXED CONTENT MANAGER™

## REPLICATION SOFTWARE

### Key benefits

#### Automated policy-driven process

Automatic scheduling capability provides operational ease of use.

#### Recovery in the event of a disaster

Data can be accessed at an alternate location in the event of primary site failure.

#### Ease of deployment

Use of an existing network infrastructure eliminates the need for additional networking or dedicated telecommunication lines.

#### Change-based replication

The software replicates changes only — instead of continually replicating the same data.

#### SEC Rule 17a-4 requirements met

Both primary file system and secondary copy are non-rewriteable/non-erasable.

### Setting the standard for content-addressed storage

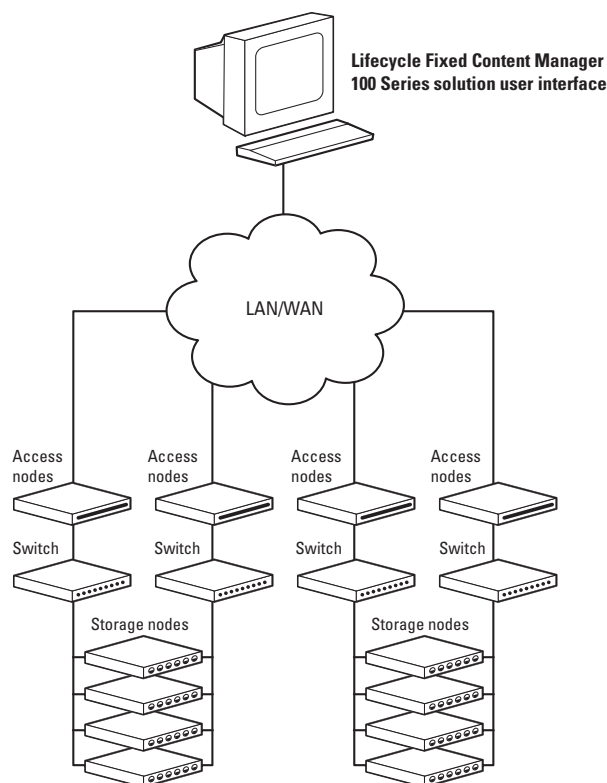
Companies today face challenges associated with accessing electronic business records in order to:

- Satisfy operational requirements
- Meet legal evidentiary demands
- Provide for disaster recovery planning
- Comply with government regulations

Companies that cannot rapidly respond to requests for business information may suffer revenue impact, increased corporate risk, losses in reputation and regulatory fines. Corporate business units and government regulators expect electronic records to be easily accessible even in the event of a physical disaster.

Lifecycle Fixed Content Manager™ replication software leverages content-addressed storage (CAS) architecture. The replication feature allows for creation of an independently addressable copy of the original data in a physically separate system. In the event of physical disaster or primary site unavailability, a second copy of the data is available for business, legal and regulatory needs.

### Lifecycle Fixed Content Manager replication software



## Robust asynchronous replication

Lifecycle Fixed Content Manager replication software enables asynchronous file system level replication. When the replication option is enabled, scheduled snapshots of a selected file system can be replicated. The snapshot is used as the source for the creation of the second copy of a primary file system. This second copy is generated and stored in a remote system for disaster recovery and regulatory compliance purposes.

## SEC 17a-4 compliance

The SEC rule 17a-4 states that if using electronic media for records stored for compliance purposes, the company shall “store separately from the original, a duplicate copy of the record stored on any medium acceptable under Rule 17a-4 for the time required.” Additionally, the information must be organized and indexed in an accurate fashion both on the original and duplicate storage media. Lifecycle Fixed Content Manager replication software satisfies these requirements. The non-rewriteable, non-erasable file attributes on the primary file system are also preserved on the second copy.

This replication software allows customers to meet the SEC second copy requirement. The primary file system characteristics are preserved on the second copy so that Write Once Read Many (WORM) characteristics and other file system attributes are preserved. Additionally, the replication option leverages snapshots so the remote copy will always be at a consistent time and date.

## Efficient replication process

You can configure replication on a per file system basis allowing the same Lifecycle Fixed Content Manager system to share replicated and non-replicated data alike. Replication can be performed on both reference and compliance volume types.

The software replicates changes only and does not continually replicate the same data — a common problem with traditional data management applications. This change-based replication happens continually and automatically.

Replication occurs over a TCP/IP connection supporting both LAN and WAN configurations and does not require any additional networking or dedicated telecommunication lines.

You schedule a time of day or frequency period at which replications automatically occur. Once scheduled, the replication process is fully automated.

The intuitive graphical user interface easily manages the replication. You can monitor the replication process to see which file systems have a replica and on which portal that remote replica lives.

As replication is configured per file system, portal replication can be configured bi-directionally for different file systems. Replication can be from one system to another as well as from “many-to-one,” with multiple primary sites and a central disaster recovery or co-location site.

The software uses cryptographic hashes to name blocks of data and collections of data blocks. The SHA-256 hash algorithm, part of a family of federally recommended security standards, is used to identify and locate data and eliminate data redundancy.

All Lifecycle Fixed Content Manager software modules run on qualified standard hardware, reducing both acquisition and operational costs.

## How it works

Lifecycle Fixed Content Manager™ 100 Series solution provides the underlying platform on which replication is enabled. Lifecycle Fixed Content Manager replication software is an option for both reference and compliance data. Once configured, replication occurs between the Lifecycle Fixed Content Manager instances automatically at the scheduled time.

## Let's get started

To learn how StorageTek can help you solve your fixed content archive problems, contact your nearest StorageTek representative, or visit [www.storagetek.com](http://www.storagetek.com).



### ABOUT STORAGETEK®

Storage Technology Corporation (NYSE: STK) is a \$2 billion global company that enables businesses, through its information lifecycle management strategy, to align the cost of storage with the value of information. The company's innovative storage solutions manage the complexity and growth of information, lower costs, improve efficiency and protect investments. For more information, visit [www.storagetek.com](http://www.storagetek.com), or call 1.800.275.4785 or 01.303.673.2800.

### WORLD HEADQUARTERS

Storage Technology Corporation  
One StorageTek Drive  
Louisville, Colorado 80028 USA  
1.800.877.9220 or 01.303.673.5151